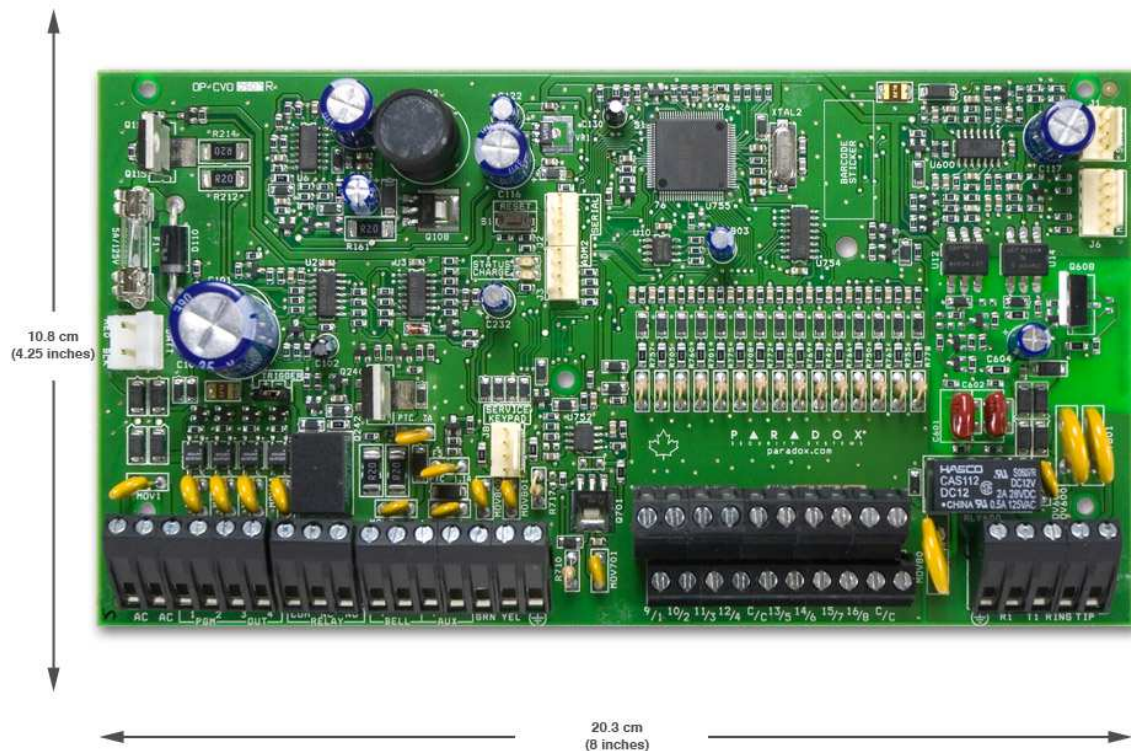


SPECTRA SP7000



Common Features

- Supports [StayD](#) mode
- 4-wire expansion bus
- Expandable to 32 zones
- Expandable to 16 PGMs
- 2 Partitions
- 32 User Codes
- Supports [PCS Series](#)
- Supports [IP100](#) Internet Module
- Supports [VDMP3](#) Plug-in voice dialer
- Supports [REM3](#) hand-held remote keypad - require RTX3 V1.31 or higher (N/A for SP4000)
- In-field firmware upgradeable via a [307USB](#) and [WinLoad](#) ([Babyware](#) for SP4000)
- Menu-driven programming for the Installer, Master and Maintenance codes
- Multiple phone numbers: 3 for monitoring station, 5 for personal dialing and 1 for pager reporting
- Patented 2 opto coupler dialer circuit - the most reliable dialer in the industry (US Patents 5751803, RE39406)
- Automatic Daylight Savings Time feature
- Push button software reset (reset to default values and restart)
- Direct connect at 9.6k baud with WinLoad ([Babyware](#) for SP4000)
- 256 events buffered
- Fits in 20cm x 25.5cm x 7.6cm (8in x 10in x 3in) and 28cm x 28cm x 7.6cm (11in x 11in x 3in) metal boxes